

NAME: _____

BRIDGE COURSE ACTIVITY - II

SESS: _____

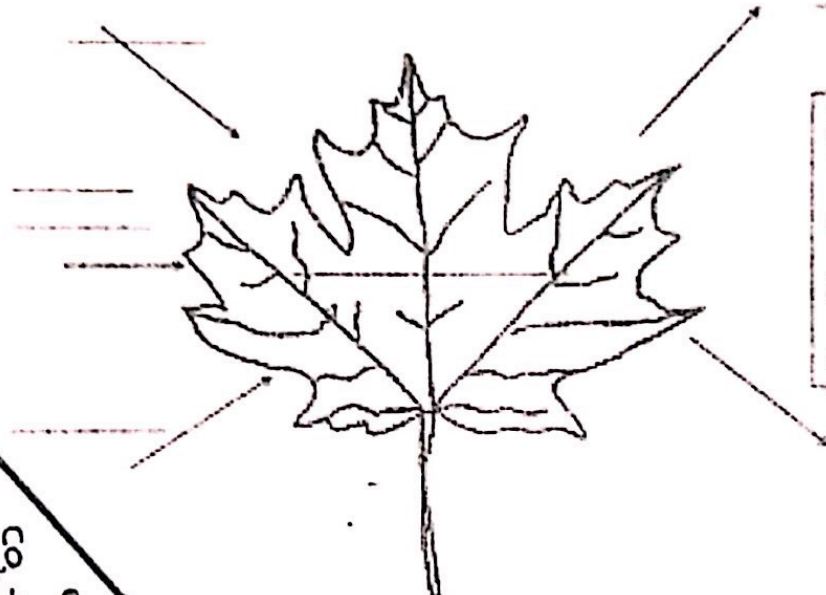
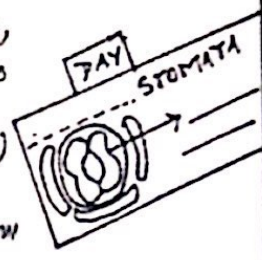
Do you know

Each one teach one how to plant one!!!

The process by which plants can repair their tissues, build their body and maintain their bodily functions and make their food

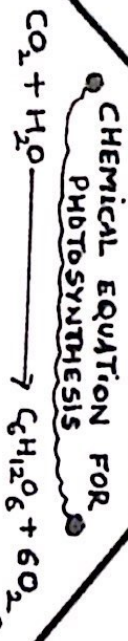
Photosynthesis (photo:: light; synthesis:: pulling together)

Green plants are able to make their own food from simple raw materials around them. This process is called _____



| | |
|----------------|----------|
| Word bank | |
| Water | sugar |
| Carbon dioxide | |
| Photosynthesis | |
| Oxygen | sunlight |

What is missing??

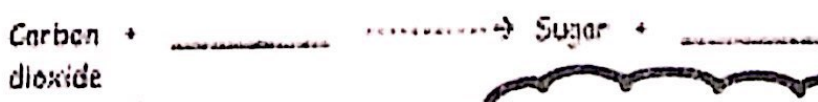


Think & fill.....

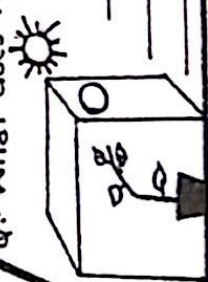
Energy is needed for _____. This energy comes from _____ is a substance that absorbs sunlight.

The light energy is able to _____ carbon dioxide and _____ into _____. The sugars are the plants _____. Oxygen is made as a _____ product.

This is the word equation for the reaction:



Q:- What does the diagram indicate?



Q:- If the leaf is turned yellow, will it be able to perform photosynthesis?

A:- _____

Q:- What will happen to plant, if it is kept in dark and unwatered for some days?

A:- _____

Name: _____

Water Conservation



Directions: Our earth has only a certain amount of water, and will never have more. We need to keep our water clean and not waste it. In what ways do you work to conserve water each day?
How can we all conserve water?

How can we conserve water
in our homes?

How can we conserve water
in our school?

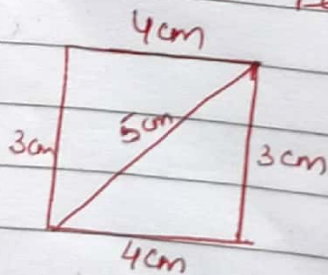
How can we keep our rivers and
lakes clean?

What should we do to ensure our
future has plenty of clean water?

(1)
DAY - 8
REVISION SHEET

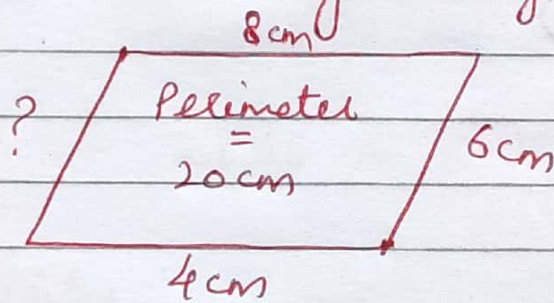
MATHS - CLASS VI
PERIMETER AND AREA

1. The length of the boundary of a figure is called _____
2. Perimeter of a Triangle is the _____ of the lengths of the three sides.
3. Perimeter of Rectangle = _____
4. Perimeter of Square = _____
5. Amount of surface enclosed by a closed figure is called _____
6. Area is always expressed in _____ units
7. Area of Rectangle = _____
8. Area of Square = _____
9. a) $1\text{m} =$ _____ cm
b) $1\text{cm} =$ _____ mm
c) $1\text{sq. m} =$ _____ sq. cm
d) $1\text{sq. cm} =$ _____ sq. mm
10. Find the perimeter of given figure



11. Find the perimeter of a rectangular plot whose length is 75m and breadth is 50m.

12. A playground which is 250m long and 20m broad is to be fenced with wire. How much wire is needed?
13. If the side of a square park is 5m then find its Perimeter.
14. The distance covered by a farmer around a field of 120m length and 80m width _____.
15. Find the missing length of the figure



16. Find the side of a square if its Area is 144m^2
17. If Area of Rectangle is 2800m^2 and its length is 100m. Find the breadth of Rectangle.
18. The side of a square tile is 10cm. How many tiles are required to cover a floor of length 2.5m and breadth 2m.
19. Find Area of square whose one side is 4m.
20. Perimeter of a circle is called its _____.